

# SPARE PARTS SECTION

## Hydraulic & Pneumatic Shop Press

Model

**HPM-100P**

Order Code P156

EDITION No : HPH-100P-1

DATE OF ISSUE : 01-2024

The following section covers the spare parts diagrams and lists that were current at the time this manual was originally printed. Due to continuous improvements of the machine, changes may be made at any time without notification.

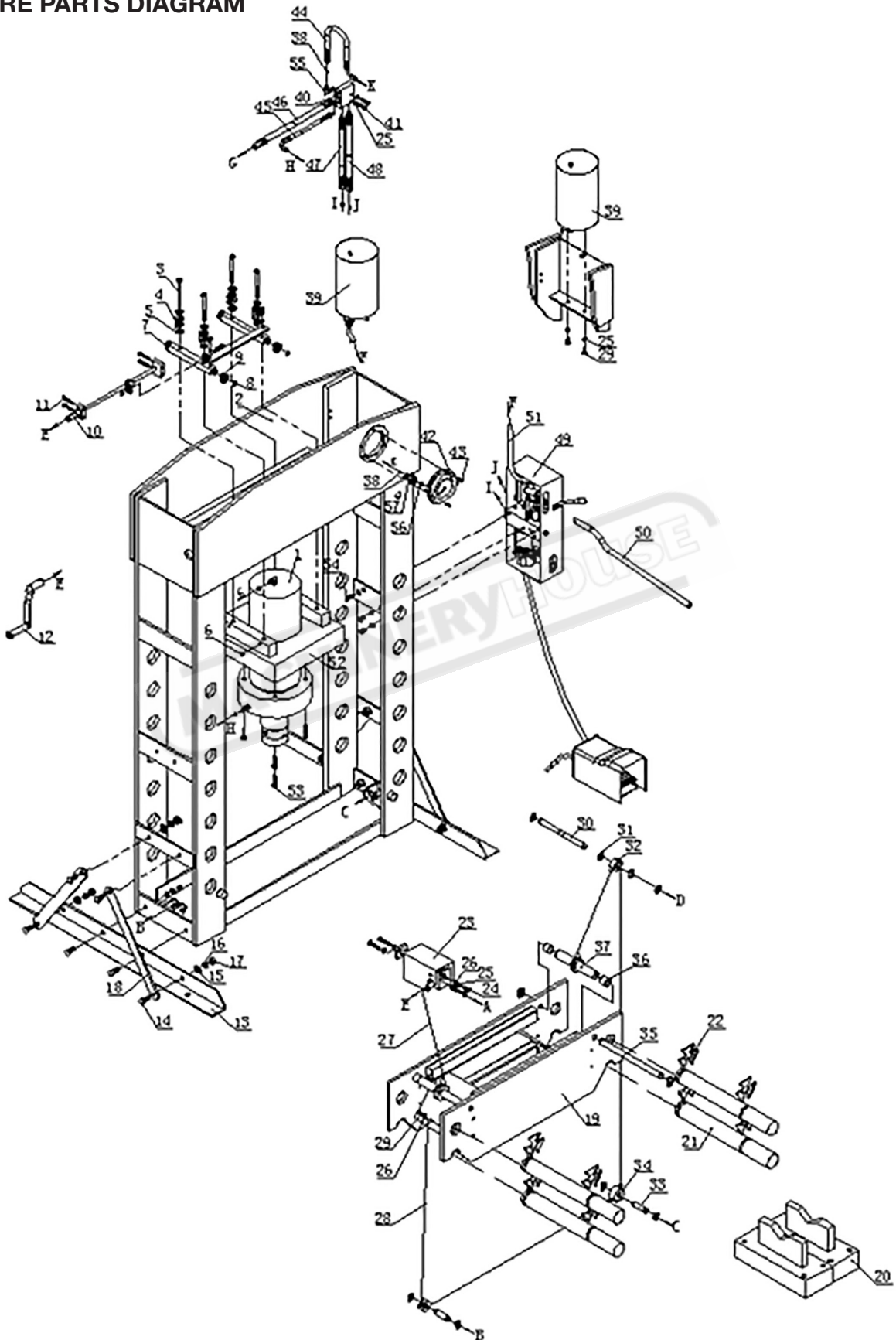
### HOW TO ORDER SPARE PARTS

1. Have your machines model number, serial number & date of manufacture on hand, these can be found on the specification plate mounted on the machine
2. A scanned copy of your parts list/diagram with required spare part/s identified.

#### **NOTE: SOME PARTS MAY ONLY BE AVAILABLE AS AN ASSEMBLY**

3. Go to [www.machineryhouse.com.au/contactus](http://www.machineryhouse.com.au/contactus) and fill out the inquiry form attaching a copy of scanned parts list.

**SPARE PARTS DIAGRAM**

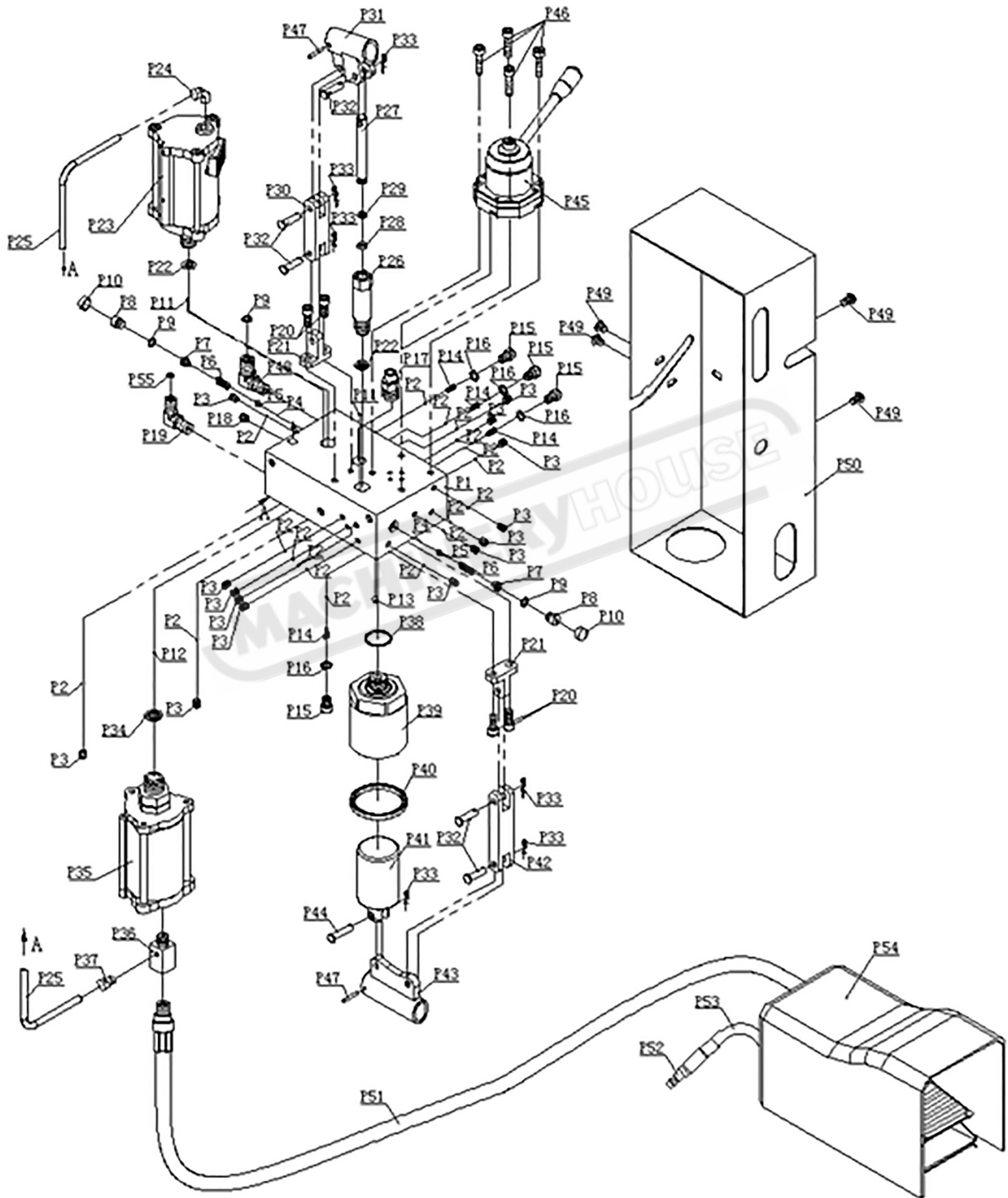


**MAIN SPARE PARTS LIST**

No.	Description	Qty	No.	Description	Qty
1	Ram Assy	1	30	Roller Pin	1
2	Body Frame	1	31	Circlip Ø20	8
3	Hex Bolt M12*130	4	32	Roller With Cover III	1
4	Spring Cove	8	33	Roller Pin 2	2
5	Spring	4	34	Roller With Cover	2
6	Hexagon skt set screw M8*10	4	35	Lifting Bar	2
7	Steel Tube II	2	36	Tube 2	4
8	Circlip Ø17	4	37	Bushing	1
9	Ball Bearing GB/T276-6203	4	38	O-ring 9*1.9	2
10	Ram Moving Equipment	1	39	Oil Tank	1
11	Hexagon Screw M8*45	4	40	Adapter	1
12	Handle Part	1	41	Hex Screw M10*40	2
13	Base	2	42	Pressure Gauge	1
14	Hex Bolt M12*30	12	43	Screw M5*8	3
15	Washer GB/T95-Ø12	12	44	Oil Hose 1	1
16	Spring Washer GB/T93-Ø12	15	45	Oil Hose (Down)	1
17	Hex Nut M12	12	46	Oil Hose 3	1
18	Support	4	47	Oil Hose 1	1
19	Working Bed	1	48	Oil Hose 2	1
20	Heel Block	2	49	Pump Assy	1
21	Pin	4	50	Handle Tube	1
22	Circlip	8	51	Oil Hose	1
23	Working Bed Moving Equipment	1	52	Under Plate	1
24	Hex Screw M10*30	4	53	Hexagon Screw M12*45	4
25	Spring Washer Ø10	8	54	Hex Bolt M12*25	3
26	Washer Ø10	5	55	Fitting	1
27	Cable 1.6M	1	56	Nylon Ring	1
28	Cable 4.3M	1	57	Connecting Nut	1
29	Hex Screw M10*20	3			

**NOTE: SOME INDIVIDUAL PARTS MAY ONLY BE AVAILABLE AS AN ASSEMBLY**

PUMP SPARE PARTS DIAGRAM

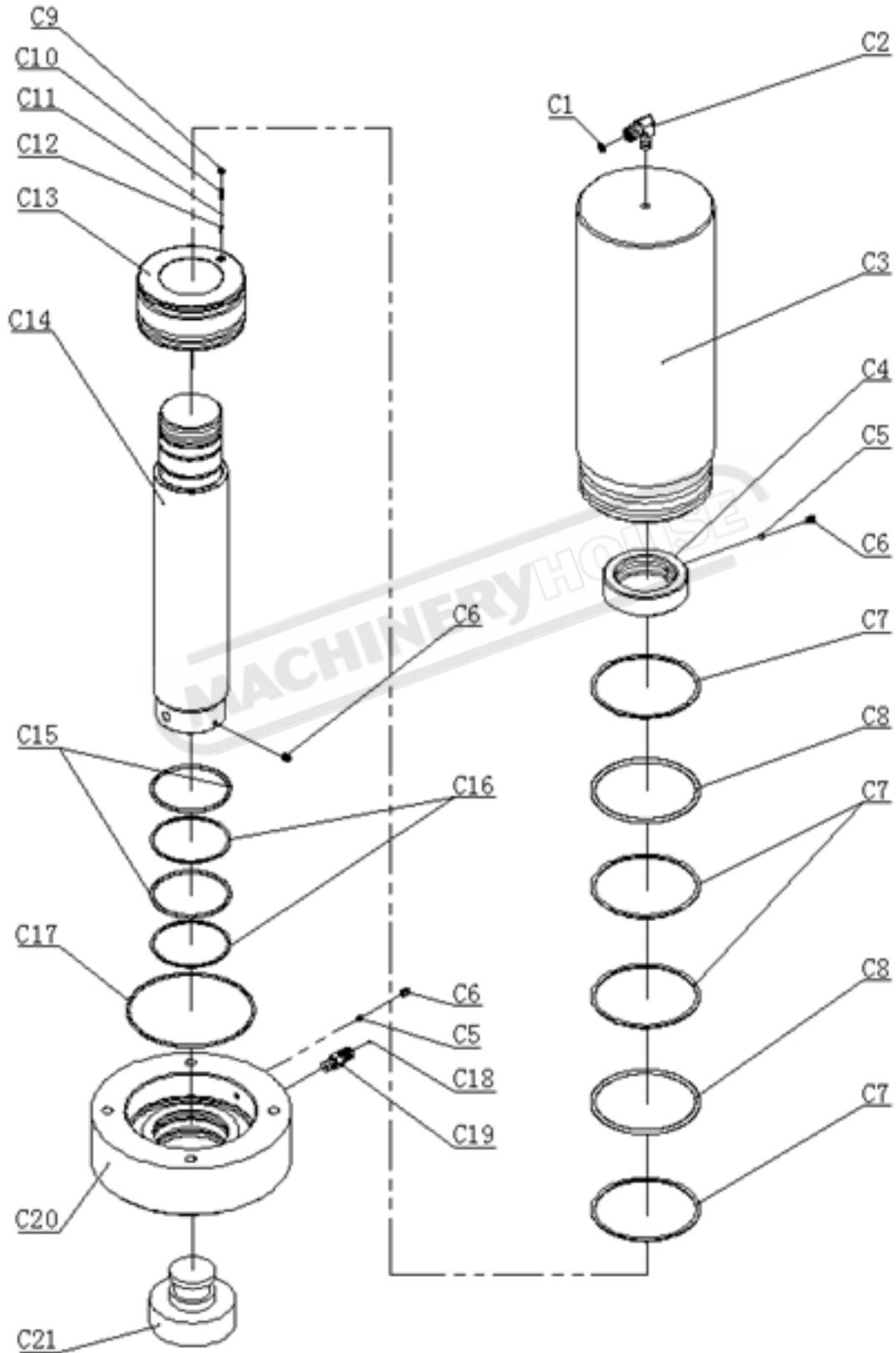


**PUMP SPARE PARTS LIST**

No.	Description	Qty	No.	Description	Qty
P1	Pump	1	P29	Circlip	1
P2	Steel Ball Ø6.0000	18	P30	Connecting Bar	1
P3	Hexagon Skt Set Screw M8*10	14	P31	Handle Socket	1
P4	Steel Ball Ø3.0000	2	P32	Pin8*30	5
P5	Steel Ball Base	2	P33	R-Pin	6
P6	Spring	2	P34	Copper Washer	1
P7	Screw	2	P35	Air Motor	1
P8	Plug Screw	2	P36	Branch Joint	1
P9	O-ring	2	P37	Connector	1
P10	Cover	2	P38	O-Ring 30*2	1
P11	Steel Ball Ø5.0000	2	P39	Big Pump Core Base	1
P12	Steel Ball Ø7.1438	1	P40	U-Ring NOK53*63*6	1
P13	Steel Ball Ø8.0000	1	P41	Big Pump Core	1
P14	Spring	4	P42	Big Connecting Bar	1
P15	Plug Screw	4	P43	Handle Socket For Low Pressure	1
P16	Copper Washer TT-245	4	P44	Pin 8*35	1
P17	NPT1/2" Connector	1	P45	Manual selector valve	1
P18	NPT1/4" Plug	1	P46	Hexagon Screw M8*35	4
P19	Fitting	1	P47	Spring Pin Ø 4*26	2
P20	Hexagon Bolt M8*20	4	P48	Fitting	1
P21	Connecting Rod Base	2	P49	Flat-head Screw GB70.2-M8*10	4
P22	Copper Washer TT-244	2	P50	Pump Cover	1
P23	Air Motor	1	P51	Air Hose 1	1
P24	NPT1/4"-8 Connector	1	P52	Air Hose Joint	1
P25	PU Tube 8*6	1	P53	Air Hose 2	1
P26	Pump Core Base	1	P54	Air Valve	1
P27	Pump Core	1	P55	O-Ring 9*1.9	1
P28	O-ring 6.5*3	1			

**NOTE: SOME INDIVIDUAL PARTS MAY ONLY BE AVAILABLE AS AN ASSEMBLY**


RAM SPARE PARTS DIAGRAM



**PUMP SPARE PARTS LIST**

No.	Description	Qty
C1	O-ring 8*2	1
C2	Fitting	1
C3	Cylinder	1
C4	Nut	1
C5	Nylon Block	2
C6	Hexagon Skt Set Screw M8*10	3
C7	PTFE Washer	4
C8	O-ring GB3452.1-129.6*5.7	2
C9	Screw	1
C10	Spring	1
C11	Steel Ball Ø4.7630	1
C12	Valve Rod	1
C13	Piston	1
C14	Piston Rod	1
C15	O-ring GB3452.1-96*4	2
C16	PTFE Washer	2
C17	O-ring GB3452.1-158.34*3.53	1
C18	O-ring GB1235-9*1.9	1
C19	Connector I	1
C20	Ring For Ram	1
C21	Serrated Saddle	1

**NOTE: SOME INDIVIDUAL PARTS MAY ONLY BE AVAILABLE AS AN ASSEMBLY**

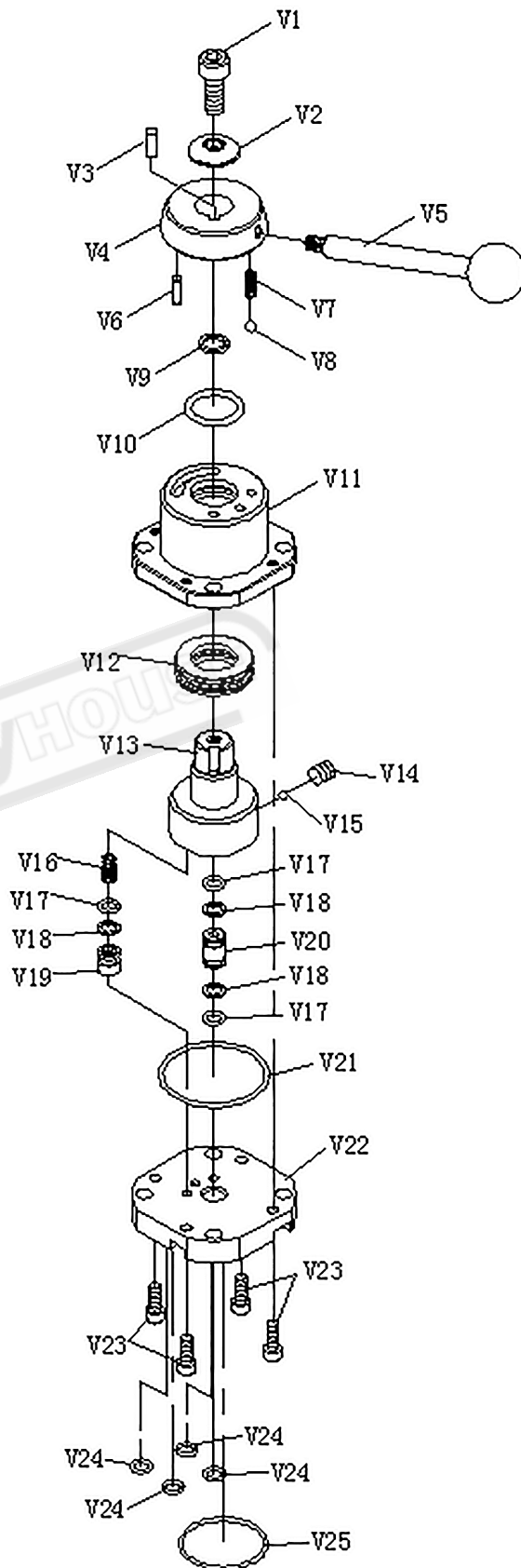


**WARNING!**

*Serious injury or death can result from using this machine BEFORE understanding its controls and related safety information. DO NOT operate, or allow others to operate, the machine until the information is understood.*

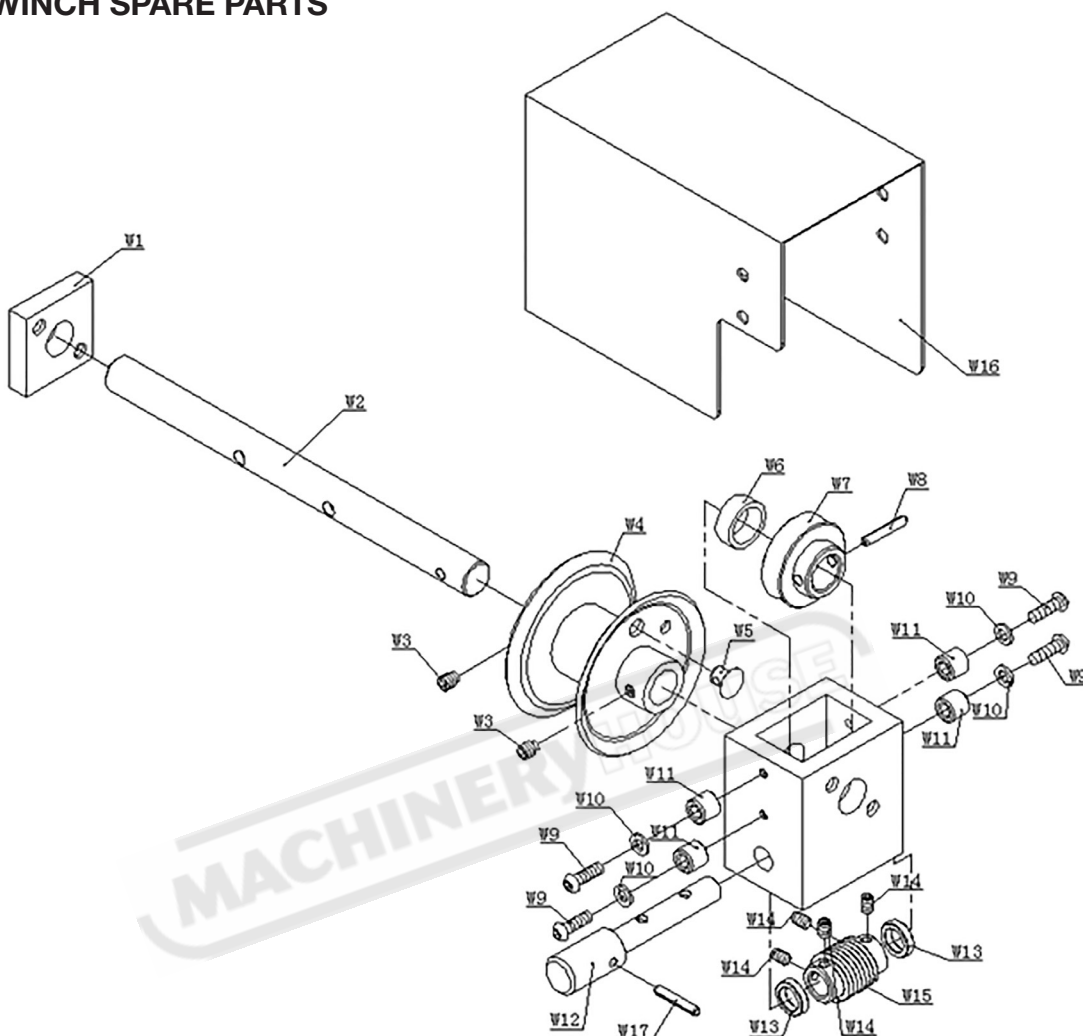
**VALVE SPARE PARTS**

No.	Description	Qty
V1	Hexagon Screw	1
V2	T Washer	1
V3	Key	1
V4	Moving Cover	1
V5	Handle	1
V6	Pin	1
V7	Spring	1
V8	Steel Ball	1
V9	Copper Washer	1
V10	O-Ring	1
V11	Valve Jacket	1
V12	Ball Bearing	1
V13	Valve Plug	1
V14	Hexagon Socket Set Screw	1
V15	Steel Ball	1
V16	Spring	1
V17	O-Ring	3
V18	PTFE Washer	3
V19	Slide Valve	1
V20	Connector	1
V21	O-Ring	1
V22	Valve Plate	1
V23	Hexagon Screw	4
V24	O-Ring	4
V25	O-Ring	1





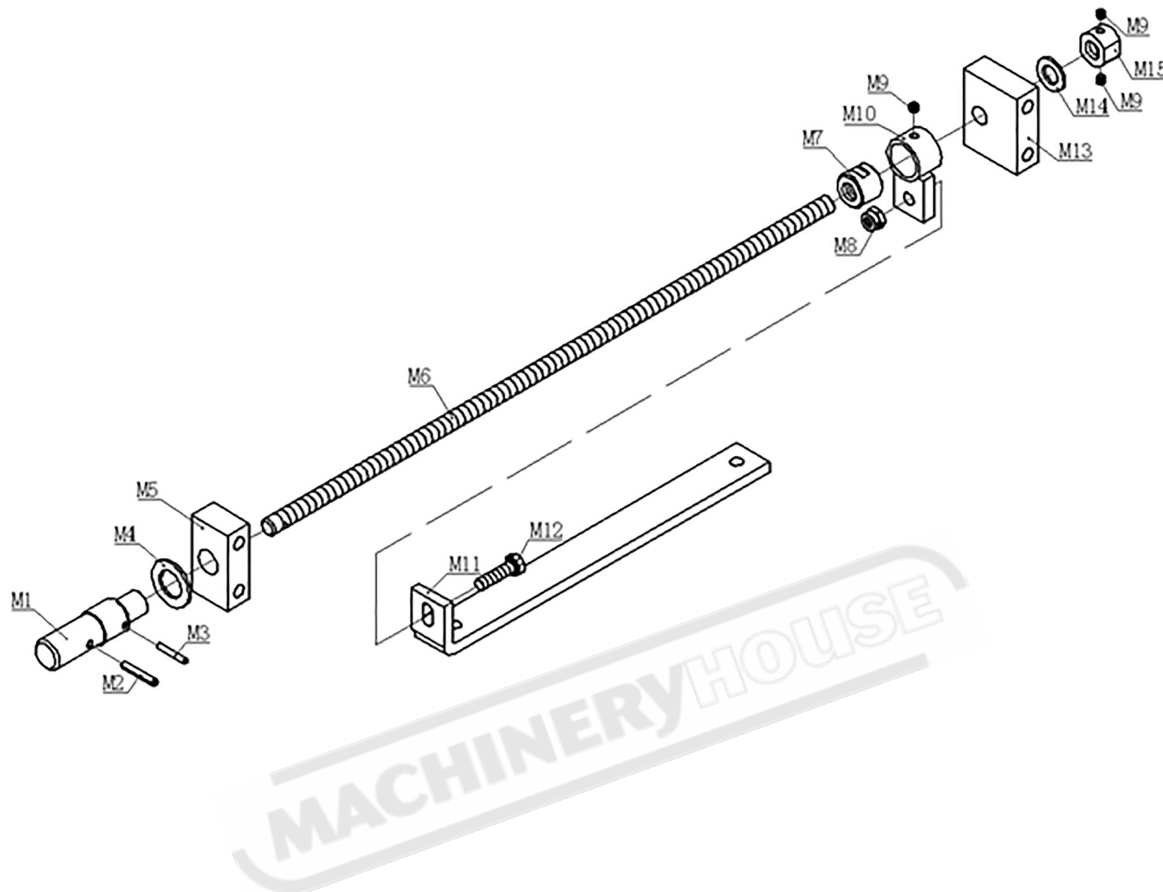
**TABLE WINCH SPARE PARTS**



No.	Description	Qty	No.	Description	Qty
W1	Support Plate	1	W10	Washer Ø10	4
W2	Worm Shaft	1	W11	Washer	4
W3	Hexagon Screw M8*10	2	W12	Worm Shaft	1
W4	Winch	1	W13	Worm Washer	2
W5	Rivet	1	W14	Hexagon Skt Set Screw M6*10	4
W6	Worm Pad	1	W15	Worm	1
W7	Worm	1	W16	Winch Cover	1
W8	Spring Pin Ø6*30	1	W17	Spring Pin Ø5*30	1
W9	Hexagon Screw 6*20	4			

**NOTE: SOME INDIVIDUAL PARTS MAY ONLY BE AVAILABLE AS AN ASSEMBLY**

**RAM MOVING SCREW SPARE PARTS**



No.	Description	Qty	No.	Description	Qty
M1	Worm Connecting Shaft	1	M9	Hexagon Skt Set Screw M6*5	3
M2	Spring Pin Ø5*30	1	M10	Nut Cover	1
M3	Spring Pin Ø4*25	1	M11	Connecting Bar	1
M4	Washer Ø18	1	M12	Hex Bolt M8*30	1
M5	Support Base 2	1	M13	Screw Base 1	1
M6	Screw	1	M14	Washer Ø12	1
M7	Nut	1	M15	Locking Nut	1
M8	Damping Nut M8	1			

**NOTE: SOME INDIVIDUAL PARTS MAY ONLY BE AVAILABLE AS AN ASSEMBLY**